

## Key Vocabulary

**Arrow slit** - A boat is something in which people can travel across water.

**Castle** – a large strong building, built in the past by a ruler or important person to protect the people inside from attack.

**Bailey** - the open area inside the outer wall of a castle.

**Battlements** - The **coast** is an area of land that is next to the sea.

**Barbican**– one of the seven large land masses on the earth's surface, surrounded, or mainly surrounded, by sea and usually consisting of various countries.

**Keep** - the strong main tower of a castle.

**Moat** - a long, wide hole that is dug all the way around a place such as a castle and usually filled with water, to make it more difficult to attack.

**Motte** - a small hill in the centre of a castle, on which a fort (= a military building designed to be defended from attack) is built.

**Mound** – a large pile of earth, stones, etc. like a small hill.

**Portcullis** - a strong gate made of bars with points at the bottom that hangs above the entrance to a castle and in the past was brought down to the ground in order to close the entrance against enemies.

**Ramparts** - a large wall built round a town, castle, etc. to protect it.

**Siege** - the surrounding of a place by an armed force in order to defeat those defending it.

**Tower** - a tall, narrow structure, often square or circular, that either forms part of a building or stands alone.

**Tudors** – The Tudors were a Welsh-English royal dynasty who ruled England and Wales from 1485 until 1603.

**Trebuchet** - a large device used in wars in the past for throwing large rocks, for example at the walls of a castle that was being attacked.

## Science (Sound)

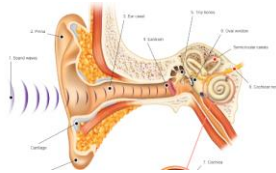
Pupils will learn to :

identify how sounds are made

understand how we hear sounds

understand how our voices produce sounds

investigate which materials are best for blocking out sound?



## Art and Design

Pupils will:

cut, make and combine shapes to create recognisable forms

use clay and other malleable materials and practise joining techniques

add materials to the sculpture to create detail

use key vocabulary to demonstrate knowledge and understanding:

rectangular, concrete, architect, 2D shape, 3D, modelling, pinching, coiling, shape, form

## Educational Visits

Bedford Castle/Castle Mound  
(8<sup>th</sup> January 2025)

## Terrific Tudors Spring Term 1

## History

Pupils will learn about:

An important local historical event –  
The Siege of Bedford Castle in 1224.



## The Tudors

Who they were and when they lived.

How people dressed and what they ate in Tudor times.

Crime and punishment in Tudor times.

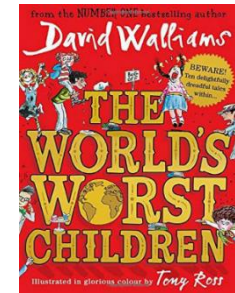
What life was like for a Tudor child.

Illness and disease in Tudor times.

How and why castles were designed



## Class Reader



## English



Pupils will learn to use;

- \*imperative verbs
- \*Prepositions
- \*fronted adverbials
- \*prefixes
- \*suffixes
- \*time conjunctions

Children will learn these fundamental skills and then apply them in their independent writing by writing a set of instructions

- \*expanded noun phrases
- \*fronted adverbials
- \*dialogue
- \*alliteration
- \*similes
- \*subordinating conjunctions
- \*onomatopoeia

Children will write from a character's viewpoint